

# TIPS Autodesk Raster Design 2007 Installation Instructions

## Getting Started

- Before starting the installation process, you will need the following:
  - Autodesk Raster Design 2007 Disk 1 of 1.
  - Serial number and environment variable information provided with the distribution information
  - A network shared folder. This is the location where the deployment image (i.e., Microsoft Installer Administrative Image) will be created. It must be a network share, with full access privileges. The deployment image will take approximately 240 MB of disk space.
  - Approximately 20 minutes to create the deployment image; thereafter, approximately 10 – 15 minutes to install the program and included fixes on each user machine.

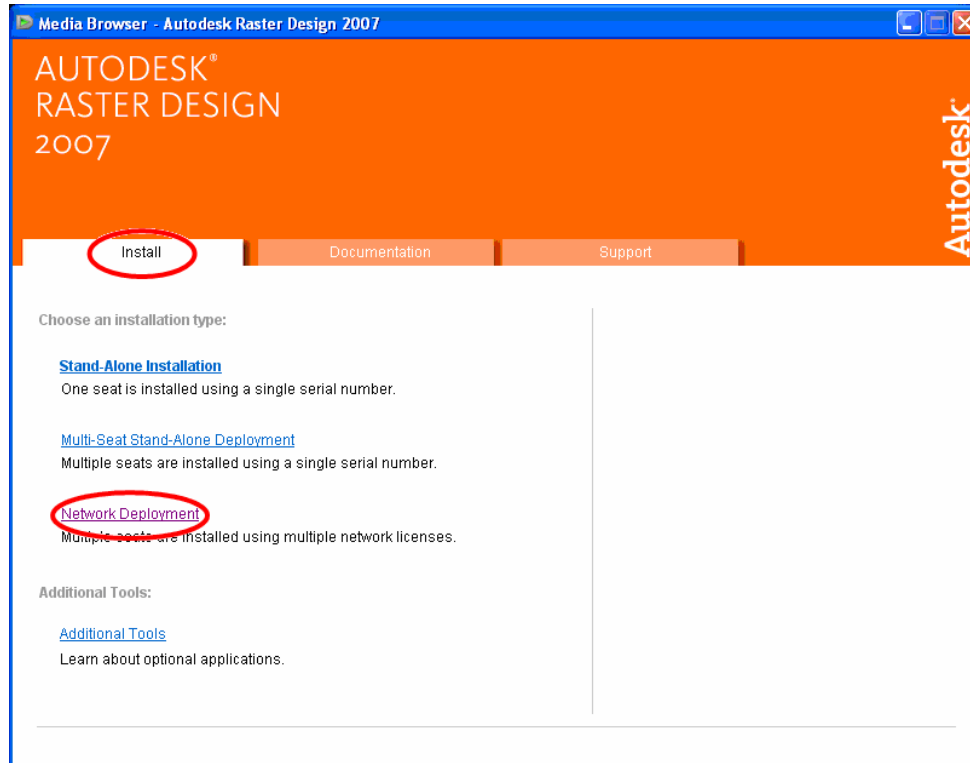
## General Overview

In order to properly install this software, you must do the following:

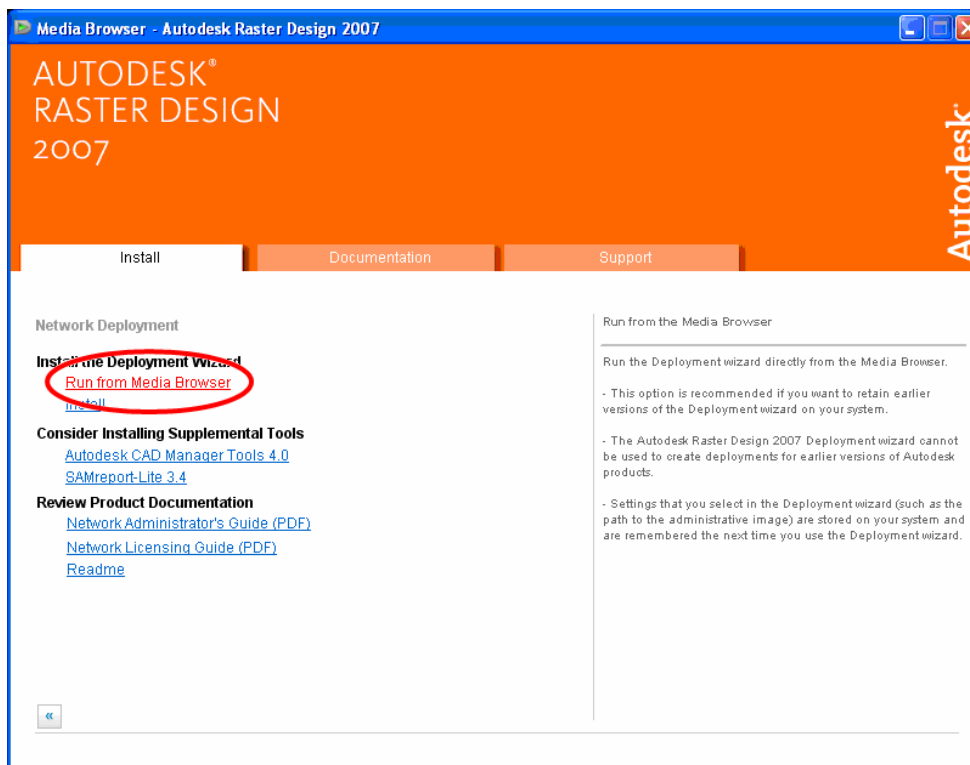
1. Create a Deployment Image. The Autodesk Raster Design 2007 installation disk included will create a deployment image that includes Service Pack 1. This deployment image is what will be used to install Raster Design to the individual user machines. The deployment image allows you to control what gets installed to the individual workstations, without having to configure each machine separately. It also sets Raster Design to look for a network license. For more information on the Network License Manager, see the 'Network Licensing Guide' under the 'Documentation' tab of the CD browser (i.e., autorun from the CD; see page 11, below.).
2. Using the deployment image created in step 1, install Autodesk Raster Design 2007 on each user's computer. The deployment installs all files necessary to run the program on each computer, and no communication with the deployment image is required after the initial installation. **Note that Autodesk Map 3D 2007 must be installed on user machines before installing Raster Design 2007; also, effective October 1, 2007, TIPS will no longer support Autodesk software versions prior to Autodesk Map 3D 2005; you must update user machines to software versions 2005, 2006, or 2007 to continue to use TIPS-distributed Autodesk and Carlson products after that date.**
3. After installing Raster Design, you must navigate to the Map 3D 2007 installation directory and rename the file licpath.lic to licpath.txt (This step should have been completed as part of the installation of Map 3D 2007.).
4. Verify that the environment variable ADSKFLEX\_LICENSE\_FILE is set according to the documentation provided with the software distribution (This variable should have been set as part of the installation of Autodesk Map 3D 2007.).
5. Open Raster Design at least once before installing any additional associated software (e.g., Carlson Mining, etc.).
6. Updates available at the time of this distribution can be found on the disk in the Patches & HotFixes folder. Visit <http://www.autodesk.com/support> to check for new updates and service packs.
7. If you have any questions or difficulties, contact Tom Mastaller at (412) 937-2108 or TMASTALLER@OSMRE.GOV; if Tom is unavailable, contact Tonya Blackburn at (303) 844-1400 x1443 or TBLACKBURN@OSMRE.GOV.

## Insert the Raster Design 2007 Installation CD

- Insert the CD labeled Autodesk Raster Design 2007 Disk 1 of 1 (If the CD does not start automatically, go to Start, Run, and browse to <CD DRIVE>:\setup.exe).
- Click **Network Deployment** under the 'Install' tab of the dialog box.

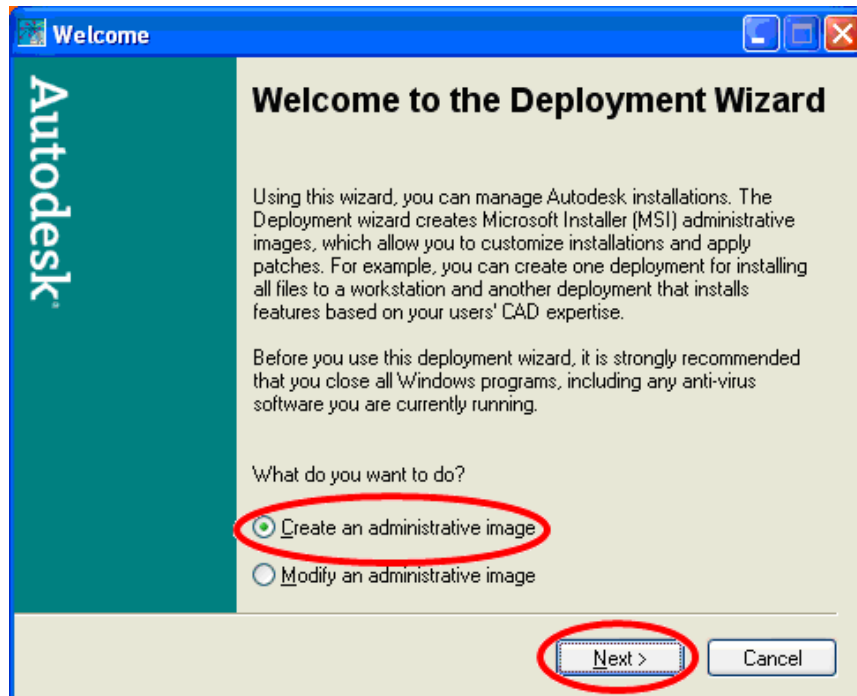


- Click **Run from Media Browser** under 'Install the Deployment Wizard'.

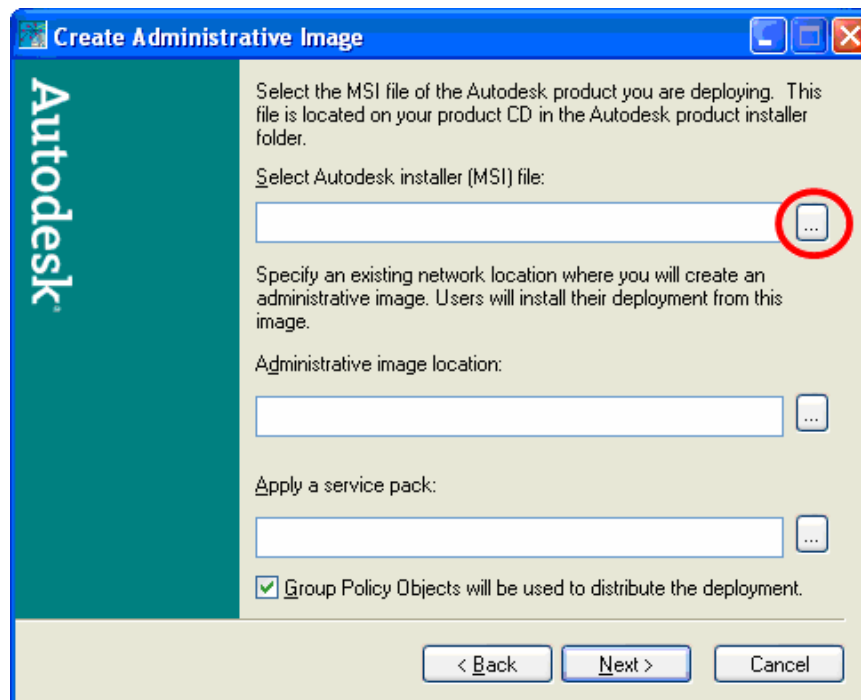


## Create a Network Deployment Image

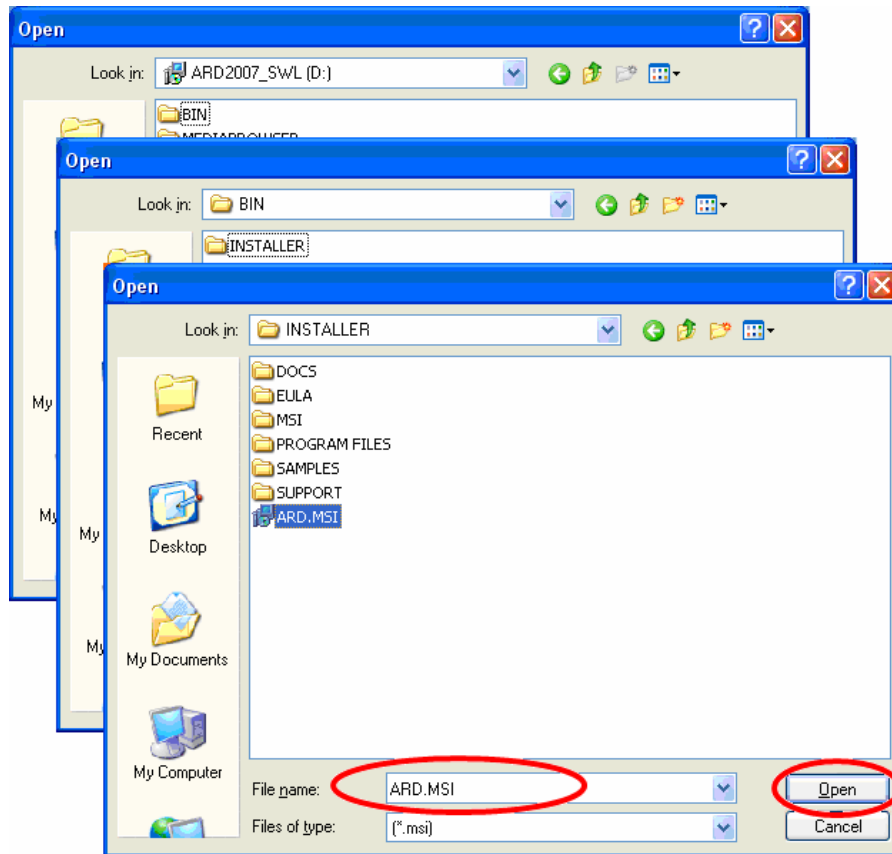
- Check the box (i.e., circle) next to 'Create an administrative image'.
- Click **Next** to begin.



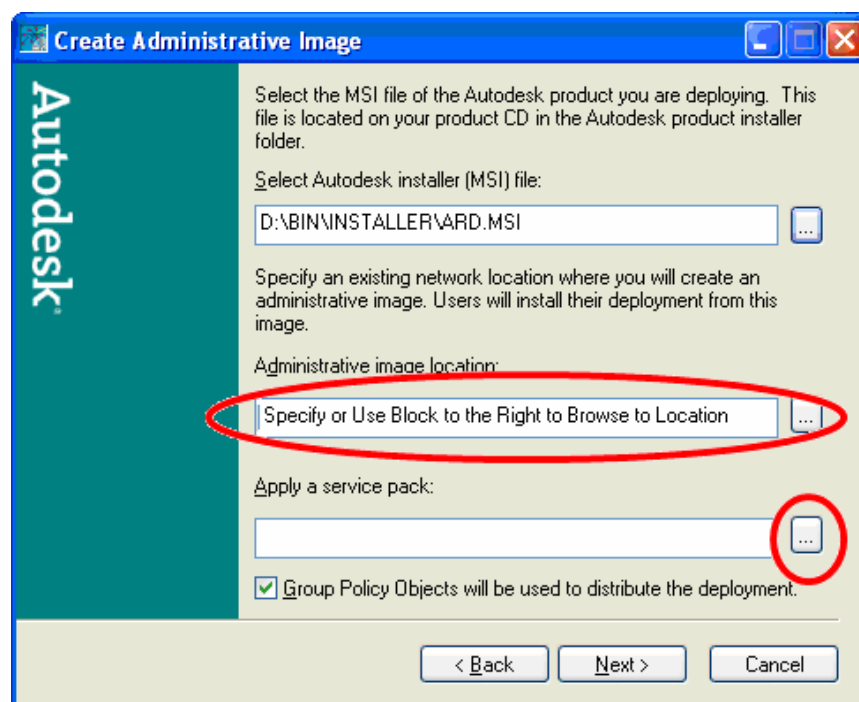
- Click the '...' button to browse to the Autodesk installer (MSI) file.



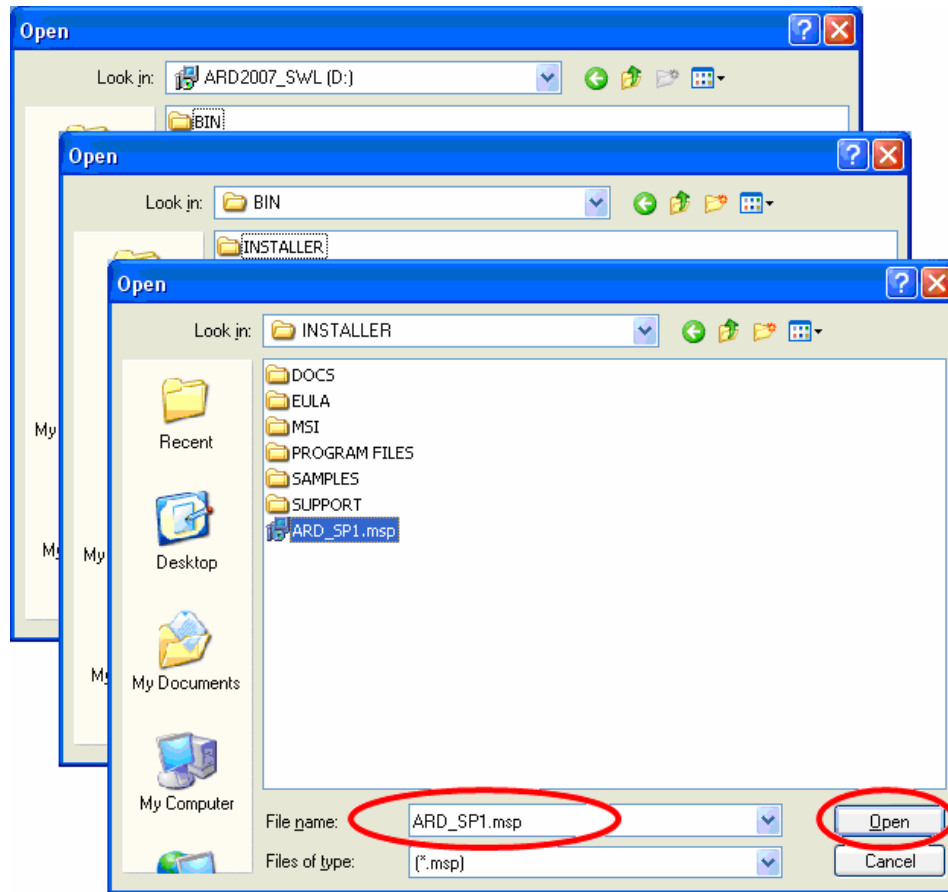
- Use the Windows browser to access the file **ARD.MSI** at <CD DRIVE>:\BIN\INSTALLER directory. Select ARD.MSI and click **Open**.



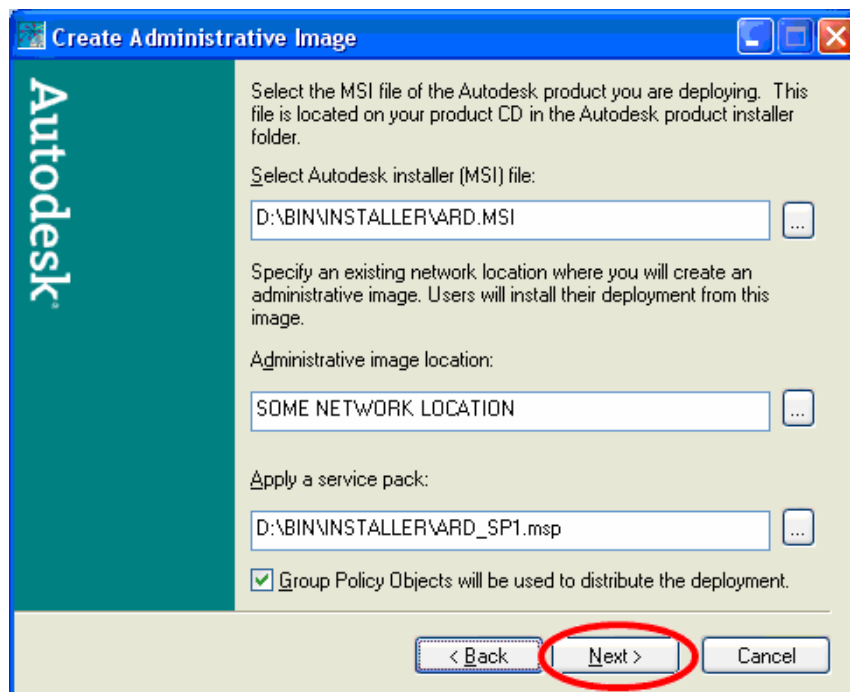
- Under ‘Administrative image location’, **specify or browse to the location where you want the image to be created** (i.e., a network shared folder with write permissions).
- After the Administrative image location is specified, click the ‘...’ button to browse to the service pack 1 MSP file location.



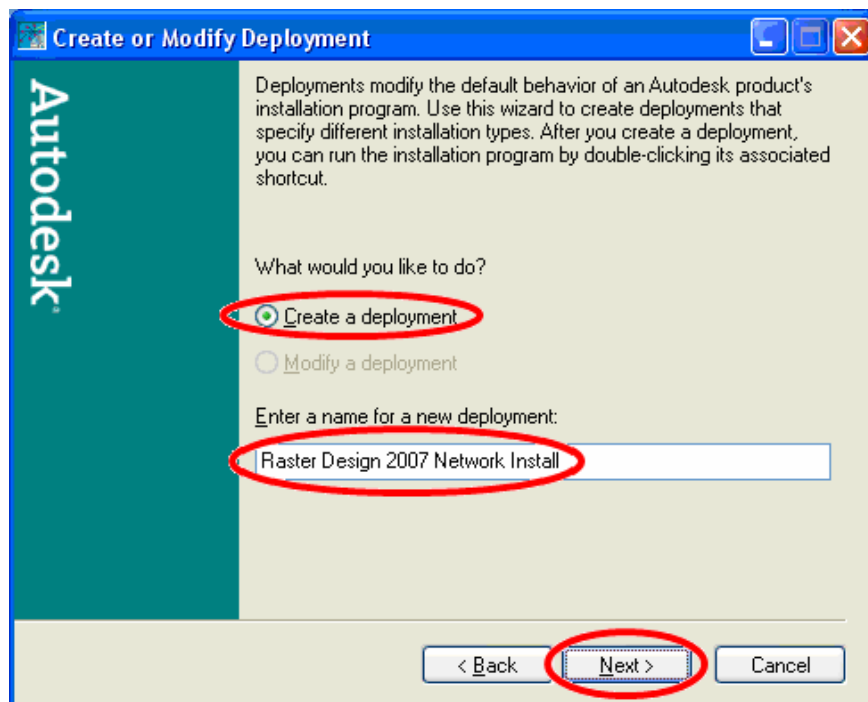
- Use the Windows browser to access the file **ARD\_SP1.msp** at <CD DRIVE>:\BIN\INSTALLER directory. Select ARD\_SP1.msp and click **Open**.



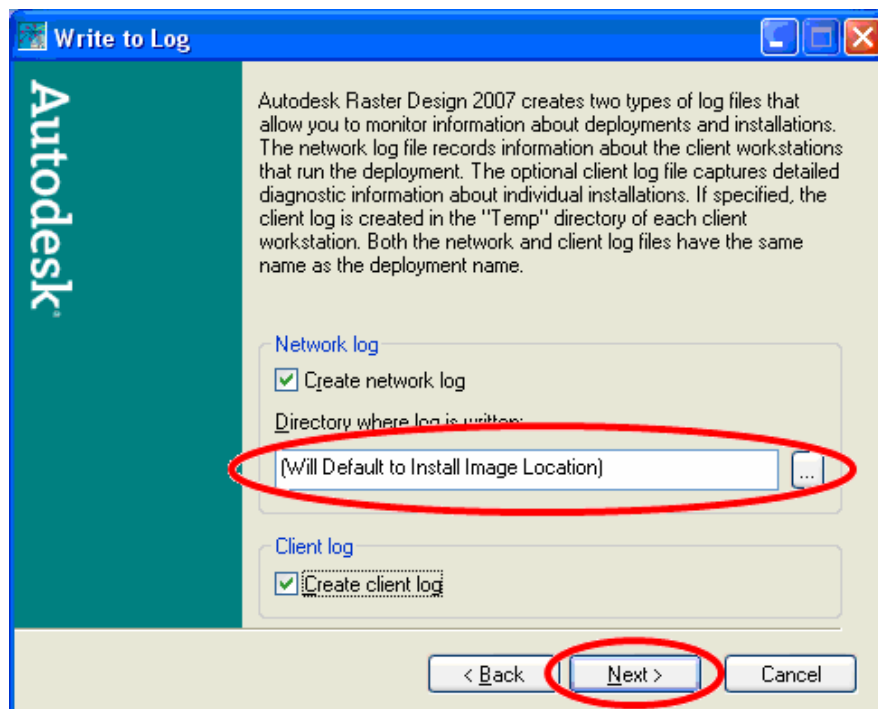
- Click **Next** to proceed.



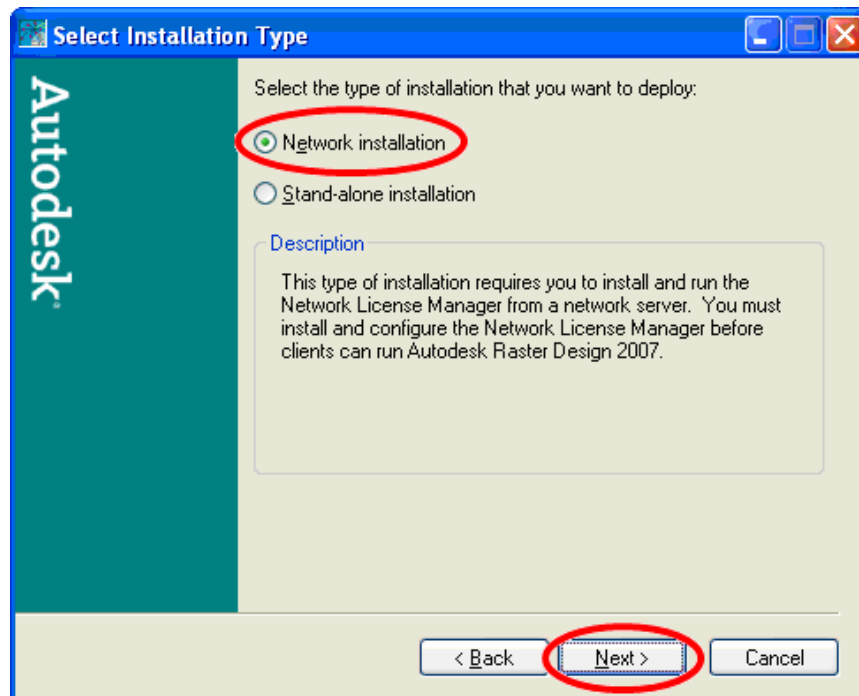
- Check the box next to 'Create a deployment'.
- Enter a name for the deployment. This should be descriptive, such as 'Raster Design 2007 Network Install'.
- Click **Next** to continue.



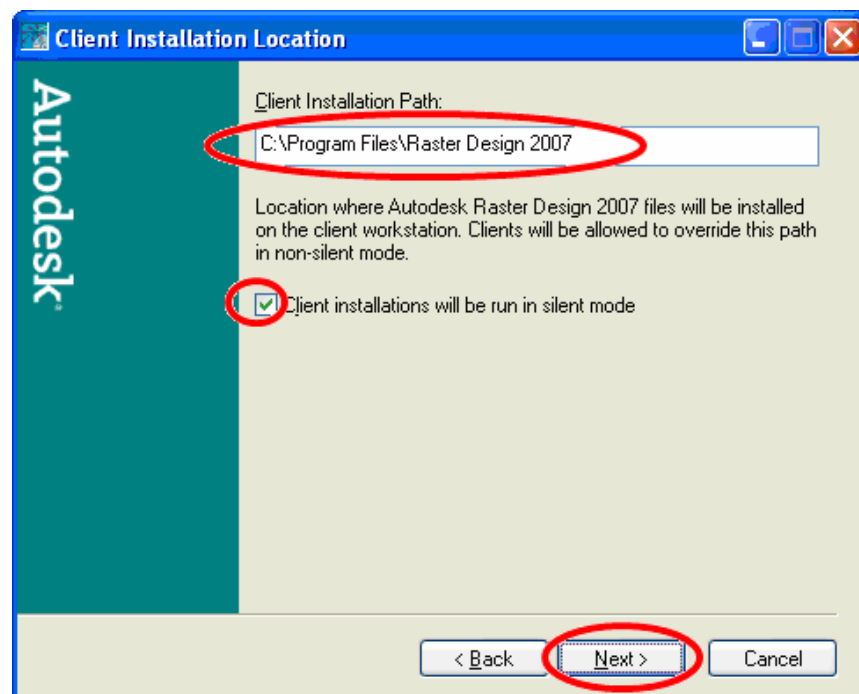
- Accept defaults to create log files; the default network log location is the network drive that was specified as the Administrative image location (see page 4, above). Change the location if desired.
- Click **Next** to continue.



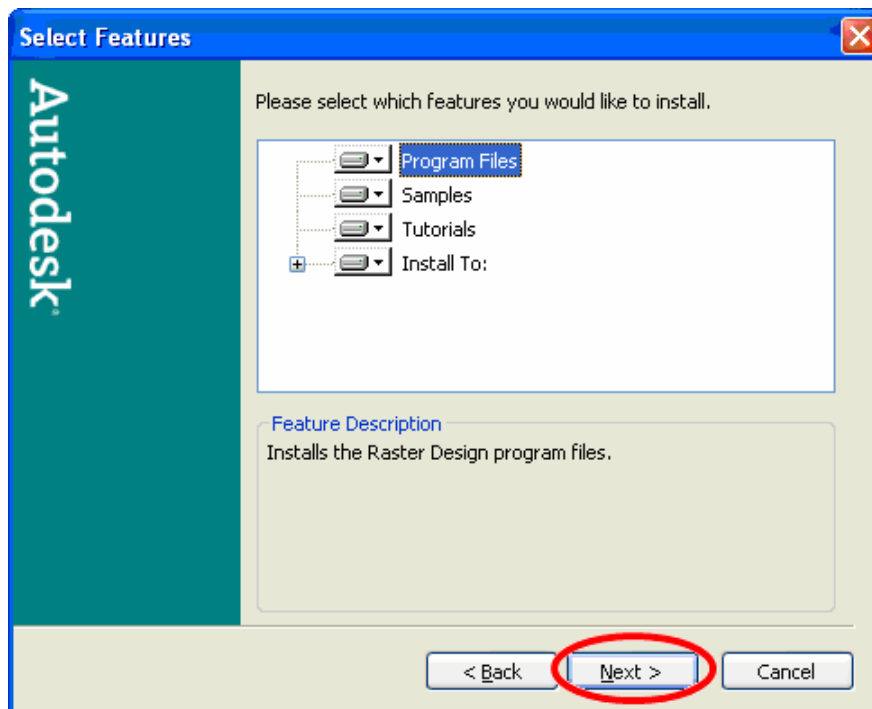
- Click the box next to 'Network installation'. This will set up Raster Design 2007 to access a license from one of the TIPS license servers.
- Click **Next** to continue.



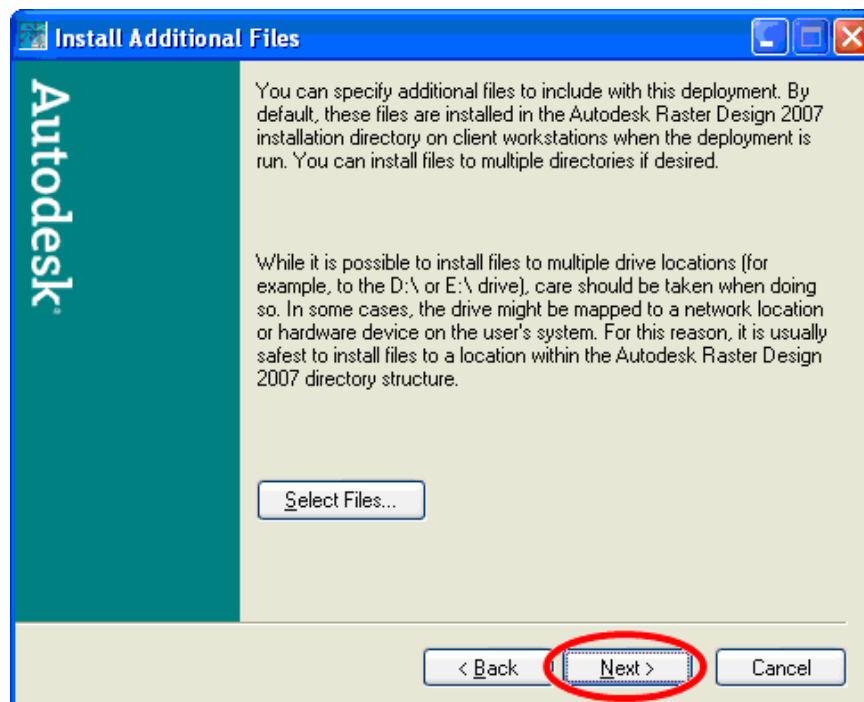
- Enter the client installation path. This is where Raster Design 2007 will install on the user's machine. The default 'C:\Program Files\Raster Design 2007' is recommended.
- If the box next to 'Client Installations will be run in silent mode' is checked, the settings cannot be overridden during the client install. This is recommended.
- Click **Next** to continue.



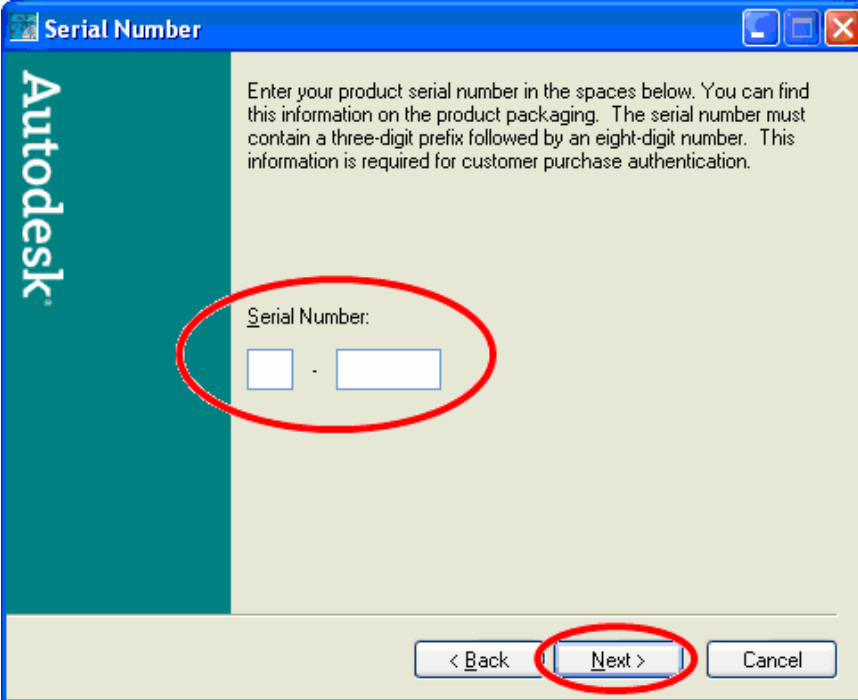
- Select features that you would like to be installed with the deployment. The default is recommended.
- Click **Next** to continue.



- To include any additional files with the deployment, click 'Select Files'.
- Click **Next** to continue.



- Enter the serial number provided with the software distribution.
- Click **Next** to continue.



Serial Number

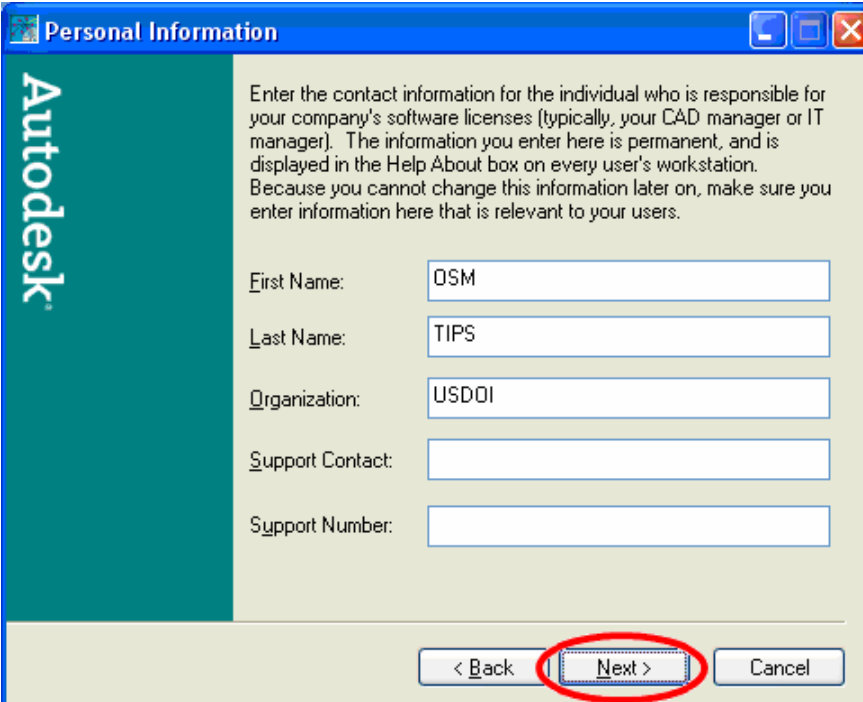
Autodesk

Enter your product serial number in the spaces below. You can find this information on the product packaging. The serial number must contain a three-digit prefix followed by an eight-digit number. This information is required for customer purchase authentication.

Serial Number:

< Back Next > Cancel

- Enter the appropriate contact information. It is recommended that you specify a department or bureau contact (e.g., your office, department, or bureau primary IT/TIPS contact) as 'Support Contact' with an associated 'Support Number'. Otherwise, enter OSM TIPS for both.
- Click **Next** to continue.



Personal Information

Autodesk

Enter the contact information for the individual who is responsible for your company's software licenses (typically, your CAD manager or IT manager). The information you enter here is permanent, and is displayed in the Help About box on every user's workstation. Because you cannot change this information later on, make sure you enter information here that is relevant to your users.

First Name: OSM

Last Name: TIPS

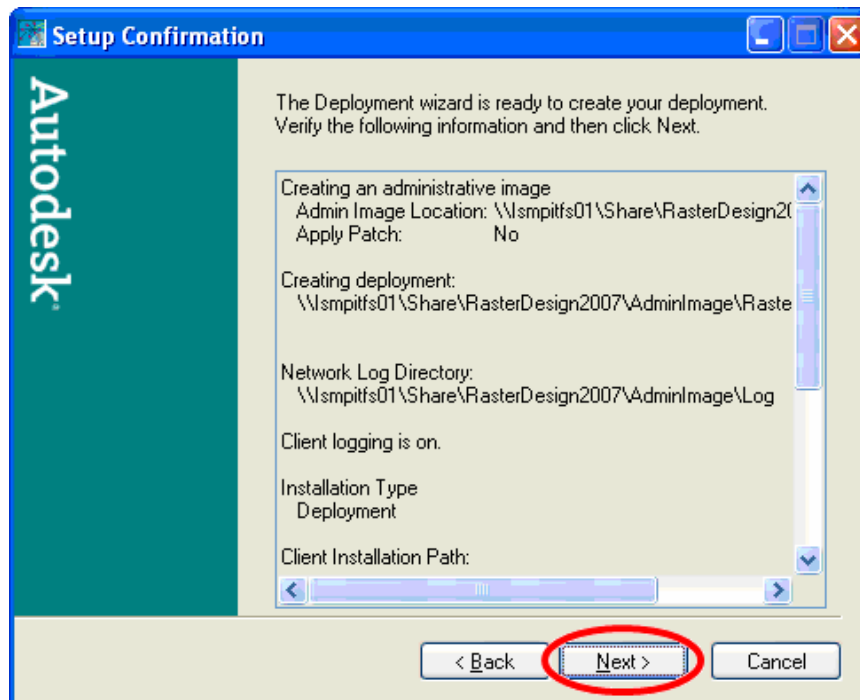
Organization: USDOJ

Support Contact:

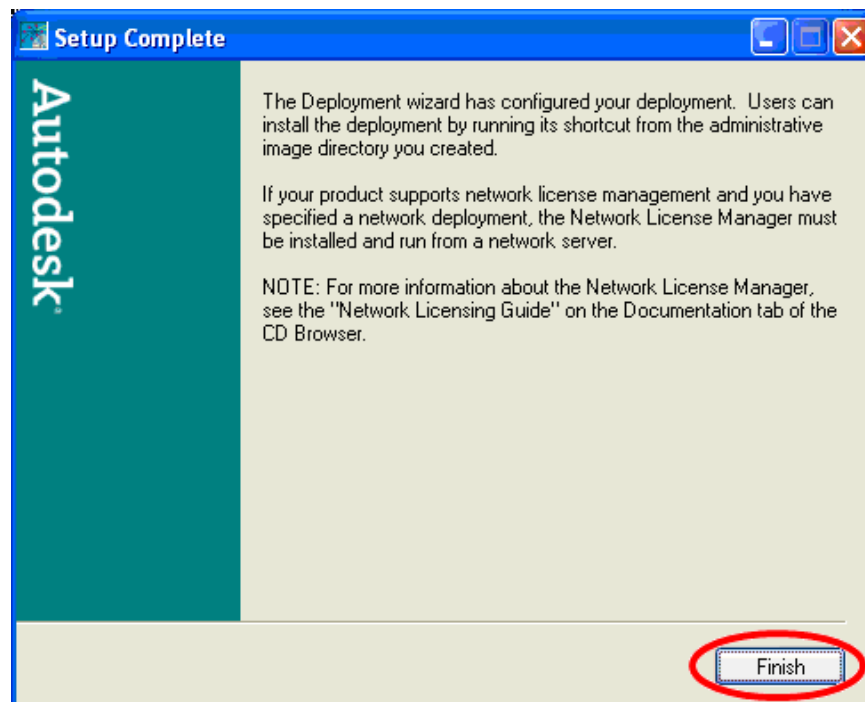
Support Number:

< Back Next > Cancel

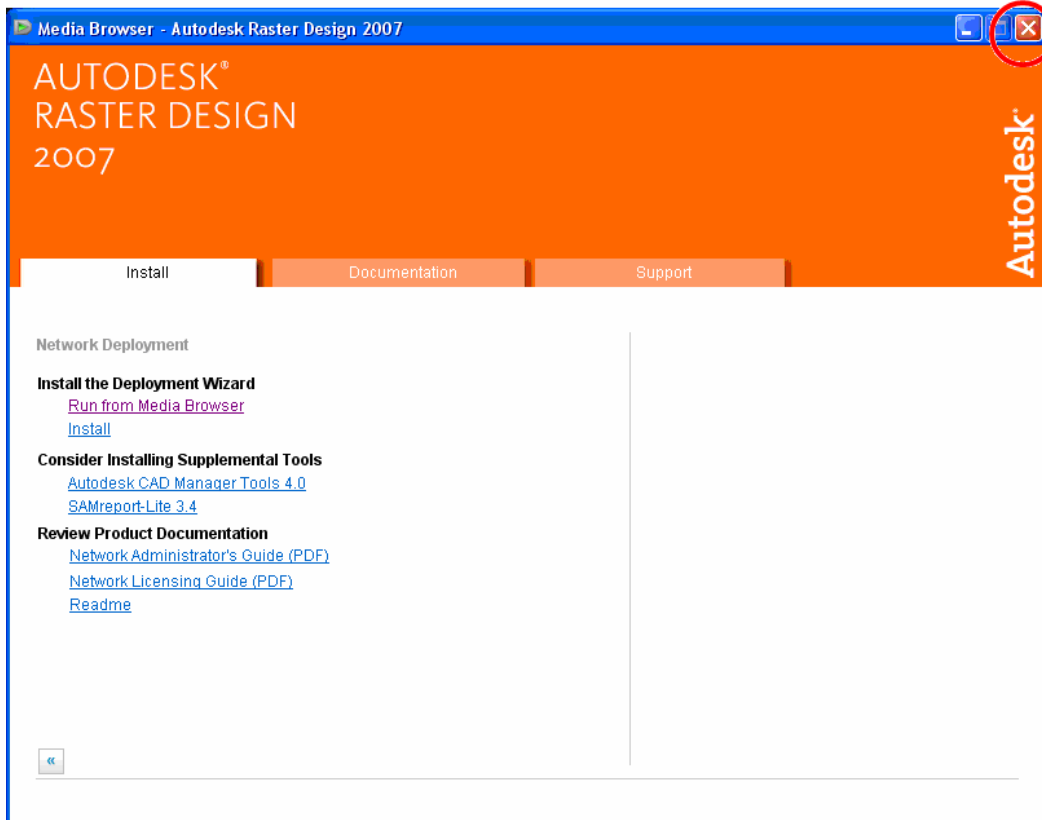
- Review this box to ensure that the settings you want have been chosen.
- Click **Next** to continue.



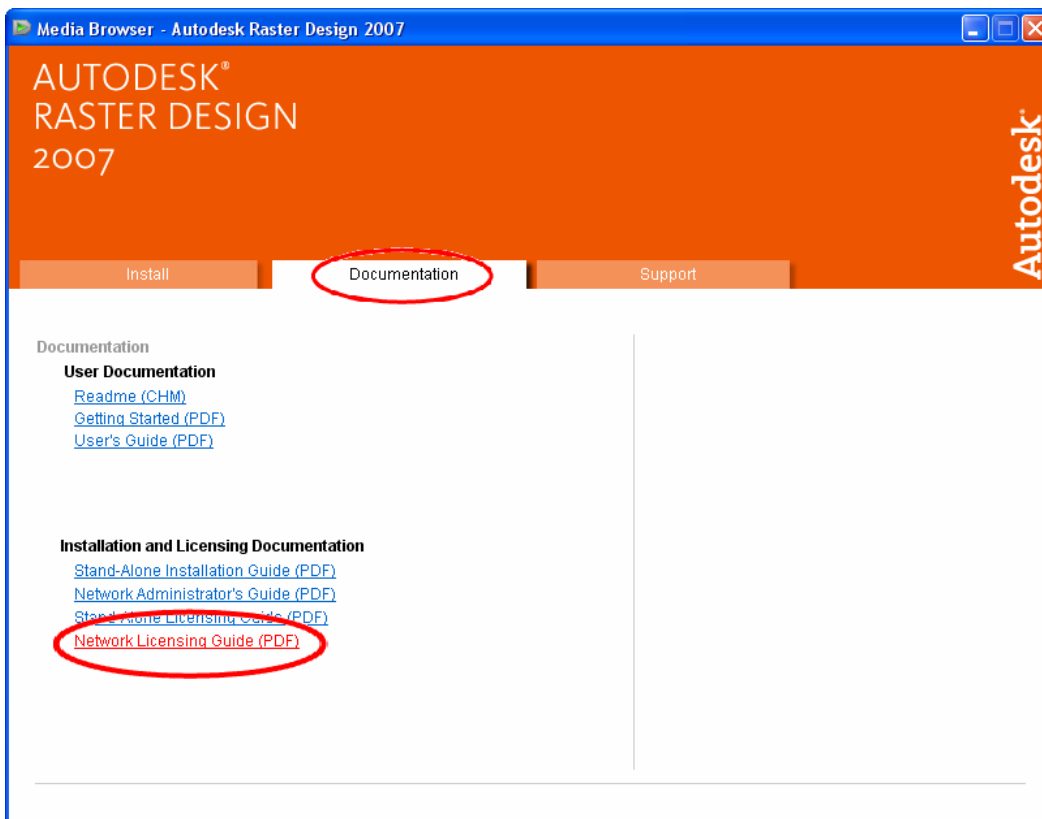
- The deployment image will now be created.
- The deployment image will take up to 15 minutes to complete, depending on computer and network speed and security settings (e.g., active real time virus scan).
- Click **Finish** to complete creation of the network deployment image.



- Click 'X' in the upper right hand corner of the Media Browser window to close the Media Browser and complete the network deployment image creation process.

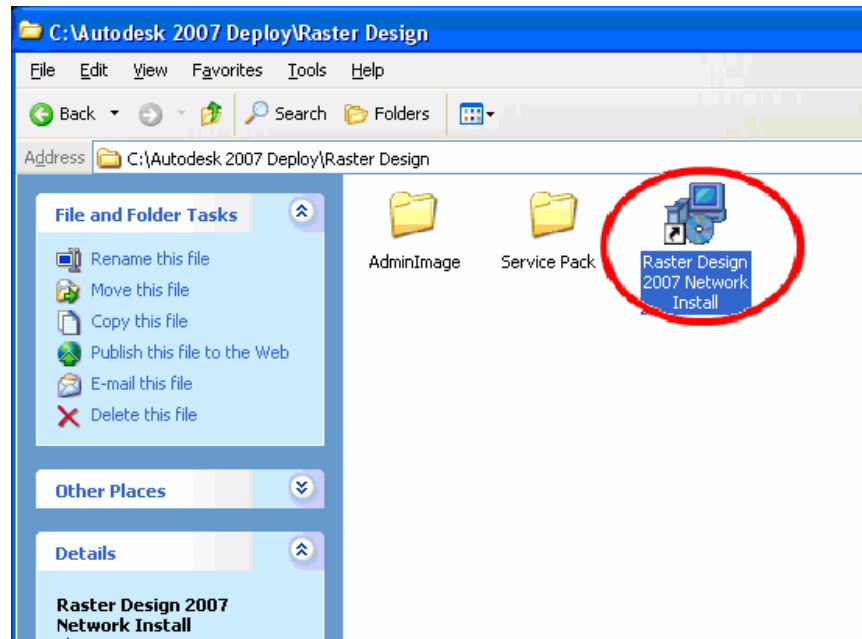


NOTE: For more information on the Autodesk Network License Manager, see the 'Network Licensing Guide' under the 'Documentation' tab of the CD browser (i.e., autorun from CD).

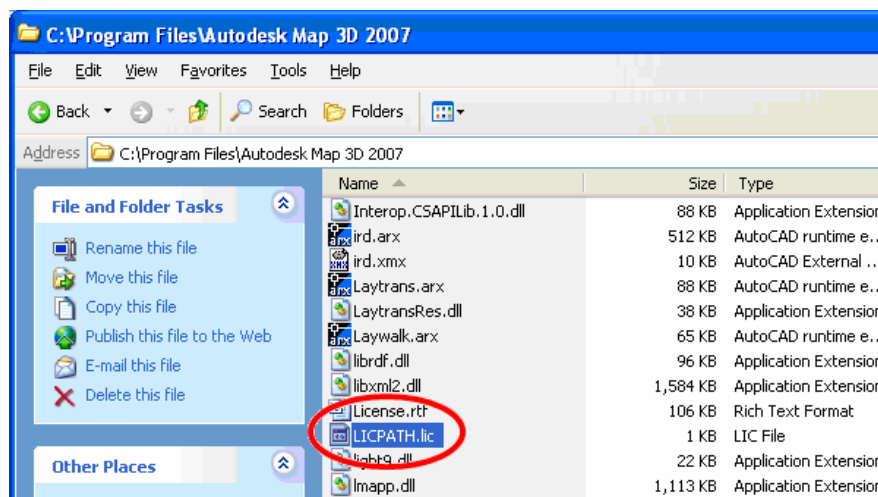


## Install Map 3D 2007 on Client Machines

- From the client machine, navigate to the directory that contains the Network Deployment Image (i.e., the network directory that was specified during creation of the deployment image; see page 4, above).
- Double click on the shortcut in this directory. It will have what ever name you specified during creation of the deployment image (See page 6, above).
- Installation will begin and should take less than 5 minutes to complete, depending on network connection and client machine speed.

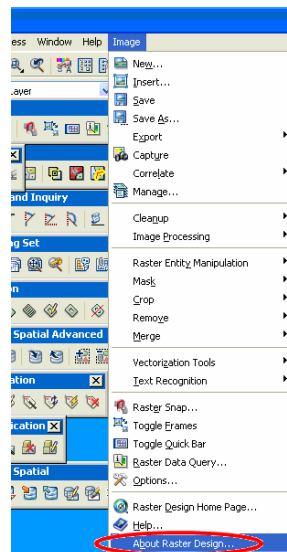


- After installation completes, and before starting Raster Design 2007 (or Map 3D 2007), navigate to the Map 3D installation directory (usually C:\Program Files\Autodesk Map 3D 2007) and delete or rename the file called Licpath.lic (This step should have been completed as part of the installation of Map 3D 2007.).
- In addition, verify that the environment variable 'ADSKFLEX\_LICENSE\_FILE' is set according to the software distribution information (This variable should have been set as part of the installation of Map 3D 2007.).

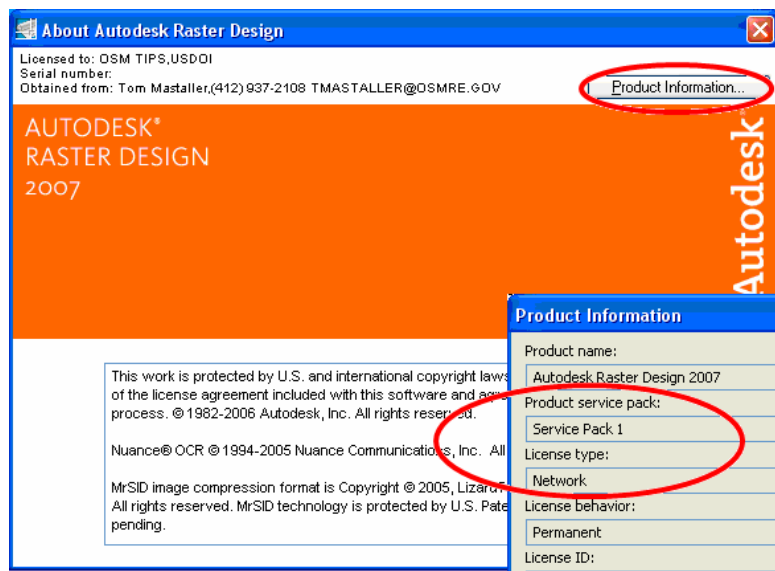


## Verify Installation / Network Licensing

- Launch Raster Design 2007 from the Start Menu or from the icon on the desktop.
- To verify that the client installation has performed properly, go to the 'Image' menu pulldown and click **About Raster Design**.



- Click on the **Product Information** button.
- Verify that the value for 'Product service pack' is 'Service Pack 1' (Note: If Service Pack 1 failed to install automatically, it can be installed directly from the CD; navigate to <CD DRIVE>:\Patches & HotFixes\Service Pack 1, and double click on the file **ard2007\_sp1.exe**).
- Verify that the value for 'License type' is 'Network'. If the value is anything else, the installation did not perform properly.



- Visit <http://www.autodesk.com/support> to check for current updates and service packs. Updates available at the time of this distribution can be found on the CD in the Patches & HotFixes folder.
- If you have any questions or difficulties, contact Tom Mastaller at (412) 937-2108 or TMASTALLER@OSMRE.GOV; if Tom is unavailable, contact Tonya Blackburn at (303) 844-1400 x1443 or TBLACKBURN@OSMRE.GOV.